

From: The Los Angeles Behavioral Economics Laboratory label@dornsife.usc.edu
Subject: LABEL May 2023 Newsletter
Date: May 30, 2023 at 10:24 AM
To: brocas@usc.edu



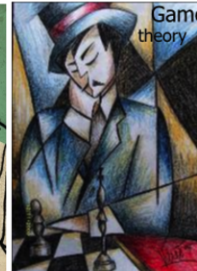
Having trouble viewing this email? [Click here to view it online.](#)



USC Dornsife



Los Angeles Behavioral Economics Laboratory
In honor of Jean-Jacques Laffont



The Los Angeles Behavioral Economics Laboratory (**LABEL**) is a research center led by Dr. Isabelle Brocas and Dr. Juan Carrillo, dedicated to the study of decision-making and its implications on life outcomes and markets. For more information on **LABEL**, please visit our **website**.

New Report

Revealing the Development of Perceptual Skills in Assessing Numbers and Quantities

As we grow, our perceptual and logical abilities become vital for the decisions we make daily. From judging distances while driving to assessing the depth of a pool before diving in, these abilities rely on perception, reasoning, and past experiences. Researchers have delved into different paradigms to unravel how children acquire and refine these skills. Through experiments and tasks that challenge their perceptual and logical abilities, researchers gain valuable insights into their development and the underlying mechanisms at play. This article explores some of these intriguing paradigms, shedding light on the fascinating journey of skill development in children..

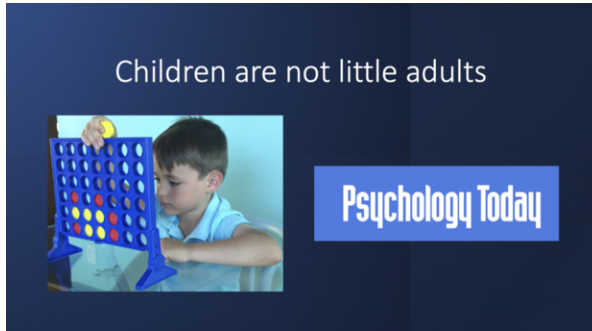


Brocas I., "**Revealing the Development of Perceptual Skills in Assessing Numbers and Quantities**" LABEL report May 2023.

[Quantitative Experimental Design](#)

For a full list of our reports, check [here](#).

In the News



Welcome to Isabelle's blog "[Biology, Development, and Behavior](#)" on Psychology Today!

In her first article "Children are not little adults", Isabelle discusses the trajectories of cognitive, social, and emotional development and why understanding these

trajectories is critical to design beneficial interventions.

Recent publications

- Zyuzin K., D. Combs, J. Monterosso and I. Brocas "[The neural correlates of value representation: from single items to bundles](#)", Human Brain Mapping, 2022.
- Brocas I. and J. Carrillo, "[Adverse Selection and Contingent Reasoning in Preadolescents and Teenagers](#)", Games and Economic Behavior, 133, 331-351, 2022
- Brocas I. and J. Carrillo, "[The development of randomization and deceptive behavior in mixed strategy games](#)", Quantitative Economics, 13, 825-862, 2022.

For more information about our research, please check [here](#).

1st Annual Los Angeles Experiments (LAX) Workshop



The first annual Los Angeles Experiments (LAX) Workshop was an exceptionally insightful and enjoyable conference! It was a great experience seeing the amazing research being conducted in L.A. A special thanks to the organizers Isabelle Brocas (USC), Kirby Nielsen (Caltech), and Kathleen Ngangoue (UCLA). Looking forward to next year's workshop!

LABEL High School Journal



Risky Business

Adolescents are more prone to risk taking than adults, making them more vulnerable to addiction and other costly behaviors. We explore how slower development in the prefrontal cortex compared to motivation systems, along with external factors such as parental knowledge and chaos in the home environment, can lead to more risk taking in adolescents.

Risk-taking and its relation to substance use in adolescents, A Choi, LABEL High School Journal, March 2023.

For a full list of LABEL HSJ reports, check [here](#).

LABEL Alumni: What's next?

Congratulations to our Training Program alumni and lab members who have recently been accepted to undergraduate and graduate schools!



Ritali Jain



Arkajyoti Sinha



Thomas Catalano

BA
Computational and
Neural Systems

Caltech

BA
Economics and Mathematics



THE UNIVERSITY OF
CHICAGO

BA
Economics



PRINCETON
UNIVERSITY



Juan González
Ph.D.
Economics



Ziwei Yu
Ph.D.
Economics



Yixuan Li
Ph.D.
Economics



USC University of
Southern California

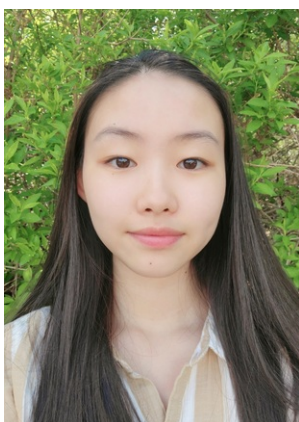


USC University of
Southern California



THE OHIO STATE
UNIVERSITY

Featured Student



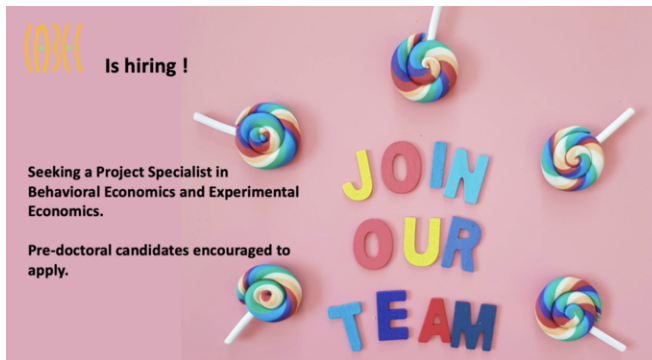
Erin Suh

Lexington High School

Erin joined the LABEL Program with a general interest in the vast field of biology. She is currently investigating the neurological circuits that are associated with risk-taking behavior. While at LABEL, she has enjoyed the challenge of reading and analyzing various research articles in order to extract the key findings of the paper.

We're Hiring!





Hiring: Pre-doc Project Specialist

LABEL is hiring a pre-doc project specialist to join us for the 2023-2024 academic year (with option for renewal) to assist with behavioral and experimental economics research. Top candidates would be recent bachelor or master graduates looking to strengthen their research skills with the goal of

eventually attending a PhD program. Students with a background in economics, psychology, cognitive science, behavioral science or related field are encouraged to apply.

Please refer to the following hyperlinks for the [position description](#) and [application form](#).

Announcements

Events

Check our current and future events [here](#).

Education at USC

LABEL disseminates knowledge regarding decision-making and the methods to study it. We sponsor **several courses and programs** for undergraduate, master and PhD students at USC, all designed for students who wish to explore careers in the Behavioral Sciences as consultants, researchers or policy makers.

NEW! The department of economics at USC is launching a new BA in **Behavioral Economics and Psychology**

Training the next generation of students

The **Little Experimentalists Program** organizes events in schools to teach students how to think strategically and to inform parents and teachers about the development of cognition and decision-making.

The **LABEL Training Program** offers students (10th grade and up) the opportunity to participate in research activities in our group. Read about our trainees' experiences [here](#). Our lab is currently accepting **applications** for the academic year 2023-2024 (deadline is June 15th).



Participate in our studies

If you are a **student or an employee** from USC, register **here**.

If you are a **parent living in Los Angeles** and would like your child to participate in our studies, register **here**.

If you are **living in Los Angeles and are 18 and older** and would like to participate in our studies on decision-making over the life cycle, register **here**.

All others, please contact us at **label@dornsife.usc.edu**



USC Dornsife

Dana and David Dornsife
College of Letters, Arts and Sciences

USC Dornsife University Park Campus | Los Angeles, CA 90089 US

This email was sent to brocas@usc.edu. To ensure that you continue receiving our emails, please add us to your address book or safe list.

manage your preferences
opt out if you no longer want to receive USC Dornsife E-Communications
Got this as a forward? **Sign up** to receive our future emails.