

**From:** The Los Angeles Behavioral Economics Laboratory [label@dornsife.usc.edu](mailto:label@dornsife.usc.edu)  
**Subject:** LABEL June 2025 Newsletter  
**Date:** June 13, 2025 at 11:16 AM  
**To:** [brocas@usc.edu](mailto:brocas@usc.edu)



**This Message Is From an External Sender**

USC detected that this message came from outside of USC.

[Report Suspicious](#)

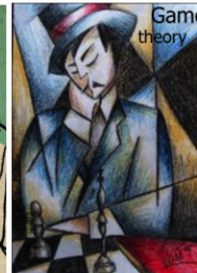
Having trouble viewing this email? [Click here to view it online.](#)



**USC Dornsife**



Los Angeles Behavioral Economics Laboratory  
In honor of Jean-Jacques Laffont

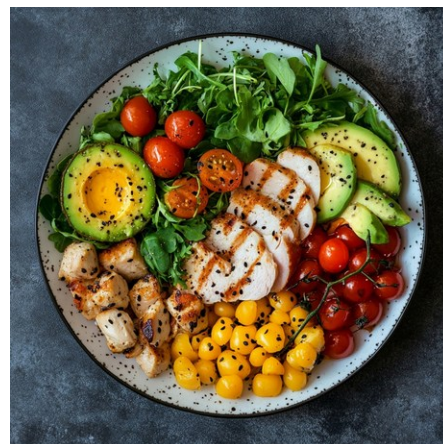


The Los Angeles Behavioral Economics Laboratory (**LABEL**) is a research center led by Dr. Isabelle Brocas and Dr. Juan Carrillo, dedicated to the study of decision-making and its implications on life outcomes and markets. For more information on **LABEL**, please visit our [website](#).

## New Research

### How Diet Shapes Young Minds

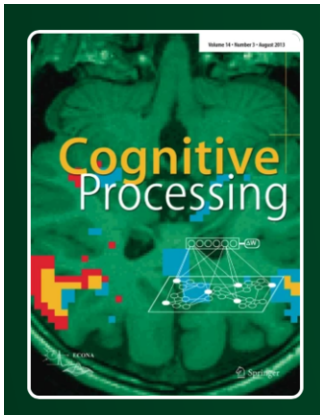
One of our new study reveals that dietary patterns in adolescence significantly predict both fluid and crystallized intelligence, even after controlling for socioeconomic and developmental factors. Using data from over 3,000 youth in the ABCD Study, we developed nutrition-based cognitive potential scores (“PolyIQ”) that correlate with IQ and are partly mediated by structural brain differences—particularly white matter integrity in the fornix and gray matter in temporal-limbic regions. The findings underscore the importance of healthy eating habits in shaping cognitive development.



development.

“From Food to Function: Dietary Scores Predict Cognitive Outcomes and Neural Signatures in Youth”, I. Brocas, L. Kirwin and M. Kuloszewski.

## Call for papers - Special Issue on Cognitive Economics



**Cognitive Processing** invites submissions for a special issue on cutting-edge methods in the science of choice under uncertainty. We seek innovative empirical or theoretical contributions—from economics, psychology, neuroscience, and related disciplines—that advance rigorous experimental or analytical approaches to incentivized decision-making.

For more information, read the call [here](#).

## Recent Publications

Brocas I. and J. Carrillo, “[Academic achievement helps coordination on mutually advantageous outcomes](#)”, **Proceedings of the National Academy of Sciences**, 122 (14) e2420306122, 2025.

Brocas I. and J. Carrillo, “[Why do children pass in the centipede game? Cognitive limitations v. risk calculations](#)”, **Games and Economic Behavior**, 150, 295-311, 2025

Brocas I. and J. Carrillo, “[Dynamic coordination in efficient and fair strategies: a developmental perspective](#)”, **Economic Theory**, <https://doi.org/10.1007/s00199-025-01644-6>, 2025

For more information about our research, please check [here](#).

## LABEL High School Journal

Self-Love or Self-Destruction?



## **SELF-LOVE OR SELF-DESTRUCTION: The Narcissistic Traits Behind Addictive Behaviors**

Narcissism is rarely linked to addiction, yet both grandiose and vulnerable narcissism can drive addictive behaviors through a shared reliance on external validation. In our latest HSJ entry, Sophie Glass explains how vulnerable narcissists often use substances to cope with deep-seated insecurity, while grandiose narcissists seek control and dominance. Despite their differences, both exhibit impulsivity and entitlement, fueling addiction.



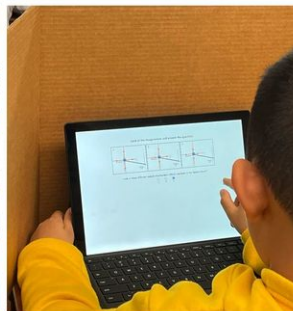
**Self-Love or Self-Destruction? The Narcissistic Traits Behind Addictive Behaviors,**  
S. Glass, LABEL High School Journal, June 2025.

## **Events**

### **SAVE THE DATE FOR LAX 2025!!**

The third **Los Angeles Experiments (LAX 2025)** workshop will take place on **Friday, October 24th 2025 at the University of California, Los Angeles**

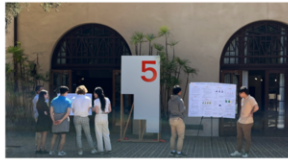
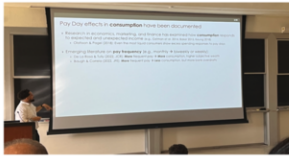
The program and other details will be posted later on [this website](#).



### **Study activities**

Our Annual Study in Lycée International of Los Angeles, Los Feliz Campus took place in May. Thanks to David Padilla for his invaluable help!

Thanks also to our partners from Colegio Bética- Mudarra in Cordoba and Colegio María Auxiliadora in Algeciras who hosted us for new studies of decision-making in networks.



## Seminars

Register **here** to attend on zoom.



Check our current and future events **here**.

## Our Graduating Trainees

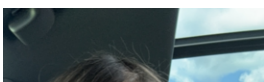
We would like to congratulate our trainees on a wonderful year, and are excited to announce where they are headed next!



**Adhya Bobby** will attend Northeastern University to major in Business Administration and Entrepreneurship



**Alexis Choi** will be headed to Princeton University next year to study English.



**Sophie Glass** will attend the University of Pennsylvania to study Business with a concentration in Behavioral Economics



and Finance.



**Leo Susser** will attend the University of Pennsylvania to study Economics.



**Genie Tang** will be attending attending Carnegie Mellon University next year to major in Economics and Statistics.

## Dissemination

Check Isabelle's blog “**Biology, Development, and Behavior**” on Psychology Today

Isabelle's interview about "Game Theory Goes To School: Strategic Decisions in Young Minds" on **Game Changer**

"Why do children pass in the centipede game: cognitive limitations vs.risk calculations".  
Watch on the **Faculti platform**



## Announcements

### Education at USC

LABEL disseminates knowledge regarding decision-making and the methods to study it. We sponsor **several courses and programs** for undergraduate, master and PhD students at USC, all designed for students who wish to explore careers in the Behavioral Sciences as consultants, researchers or policy makers.

### Training the next generation of students

The **Little Experimentalists Program** organizes events in schools to teach students how to think strategically and to inform parents and teachers about the development of cognition and decision-making.

The **LABEL Training Program** offers students (10th grade and up) the opportunity to participate in research activities in our group. Read about our trainees' experiences [here](#). Our lab is accepting **applications** for academic year 2025-2026 **until June 15!!**



### Participate in our studies

If you are an undergraduate **student** at USC, register [here](#).

If you are a **parent living in Los Angeles** and would like your child to participate in our studies, register [here](#).

If you are **living in Los Angeles and are 18 and older** and would like to participate in our studies on decision-making over the life cycle, register [here](#).

All others, please contact us at [label@dornsife.usc.edu](mailto:label@dornsife.usc.edu)



**USC Dornsife**  
Behavioral Sciences

Dana and David Dornsite  
College of Letters, Arts and Sciences

USC Dornsife University Park Campus | Los Angeles, CA 90089 US

This email was sent to brocas@usc.edu. To ensure that you continue receiving our emails,  
please add us to your address book or safe list.

**manage** your preferences  
**opt out** if you no longer want to receive USC Dornsife E-Communications  
Got this as a forward? **Sign up** to receive our future emails.